

HOW THE TEST WORKS

An advanced, technological method using bioenergetic analysis from a DNA sample

Assessing over 60,000 health signals across the body – measuring subtle stress patterns, imbalances and nutritional needs.

Just a pin-prick blood sample is needed. Visit one of our Clinic locations or purchase the home test kit and send back blood sample. Available to customers worldwide.



Disclaimer: The Neurodivergence Wellness Test uses bioenergetic scanning to assess patterns of imbalance in the body. It is not a medical diagnostic tool and does not replace professional medical advice. All information is provided for educational purposes only. You are advised to consult your GP or healthcare provider for any medical concerns. The Test Clinic accepts no liability for decisions made based on this report or for any associated outcomes.

EASY TO USE HOME TEST KIT

Each test kit includes:

Lancets (for blood sample collection)

Instruction guide

Pre test health form

Return envelope (pre paid for UK customers)



Accredited by
BCMA (British Complimentary Medicine Association)
CMA (Complementary Medical Association)



UK BASED TESTING



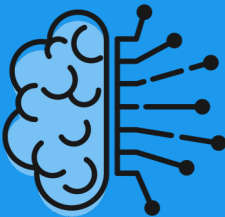
www.thetestclinic.com
enquiries@thetestclinic.com
The Test Clinic (UK)



Neurodivergence Wellness Test

Understand Your Child, Support Their Unique Needs

A holistic health test designed to uncover hidden imbalances that may contribute to neurodivergent traits such as ADHD, autism, sensory sensitivity, or learning challenges.



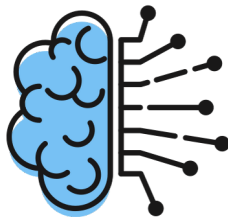
WHAT IS THE NEURODIVERGENCE WELLNESS TEST?

A holistic approach to neuro-developmental support

Many children today face difficulties with attention, emotional regulation, learning, or sensory processing. While behavioural therapies and educational support are essential, they often miss a vital piece: the internal biology behind the behaviour.

The Test Clinic Neurodivergence Wellness Test is designed to help identify underlying stressors and hidden imbalances across your child's body systems. This can help give you a deeper insight into what may be contributing to:

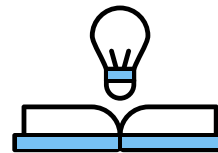
- Focus and attention difficulties
- Sensory overload or physical agitation
- Mood swings, anxiety, or emotional reactivity
- Digestive or immune symptoms
- Processing delays or low resilience



Whether your child has a diagnosis (ADHD, autism, SPD, etc.) or simply does not seem to be thriving, this test can help uncover what their body may be asking for — so you can support them with clarity and confidence.



WHAT WE ASSESS And why it matters



Using a multitude of Class 11a medical equipment, together with our specialist knowledge, the following areas are assessed

- **Food Intolerances & Sensitivities**
Some foods can trigger inflammation, digestive upset, or immune responses that affect behaviour, mood and focus.
- **Gut and Microbiome Health** (Including Pathogens)
The gut-brain connection is critical for emotional and neurological balance. We assess digestive stress, microbial imbalance and signs of harmful bacteria or yeast that may influence focus, anxiety and energy.
- **Neurological and Sensory Regulation**
We evaluate nervous system stress patterns including vestibular and auditory regulation. This may impact sleep, coordination, behaviour and how your child responds to light, noise or touch.
- **Detoxification, Immune Load & Vaccine Stress**
If your child struggles to eliminate toxins or is under immune pressure, this may contribute to mood volatility, poor focus, or frequent illness. We also include testing for vaccine-related regulatory stress, where relevant.
- **Nutritional Needs**
We check for energetic signs of low vitamin D, omega-3s, magnesium, B-vitamins, and other key nutrients — all essential for cognitive function and emotional resilience.

WHAT YOU WILL RECEIVE



- A written report with easy to understand explanations of your child's stress patterns
- Tailored food, supplement, and lifestyle guidance
- Advice on gut and detox support needs
- Access to email support from our team
- Holistic insight to support your child naturally

SIMPLE 3 STEP PROCESS

- 1) Order your test kit online.
- 2) Send DNA sample back to laboratory.
- 3) Receive results by email.

WHY PARENTS CHOOSE THE NEURODIVERGENCE WELLNESS TEST

- Provides a clear, whole-body view of what may be affecting your child's wellbeing
- Focuses on root causes (not just managing surface symptoms)
- Identifies imbalances often missed in conventional tests
- Non-invasive and stress-free — ideal for children
- Offers practical, personalised steps you can take right away
- Created by experts with over 25 years in holistic health
- Trusted by families in the UK and internationally
- This is more than a test — it is a roadmap to understanding your child on a deeper level.

